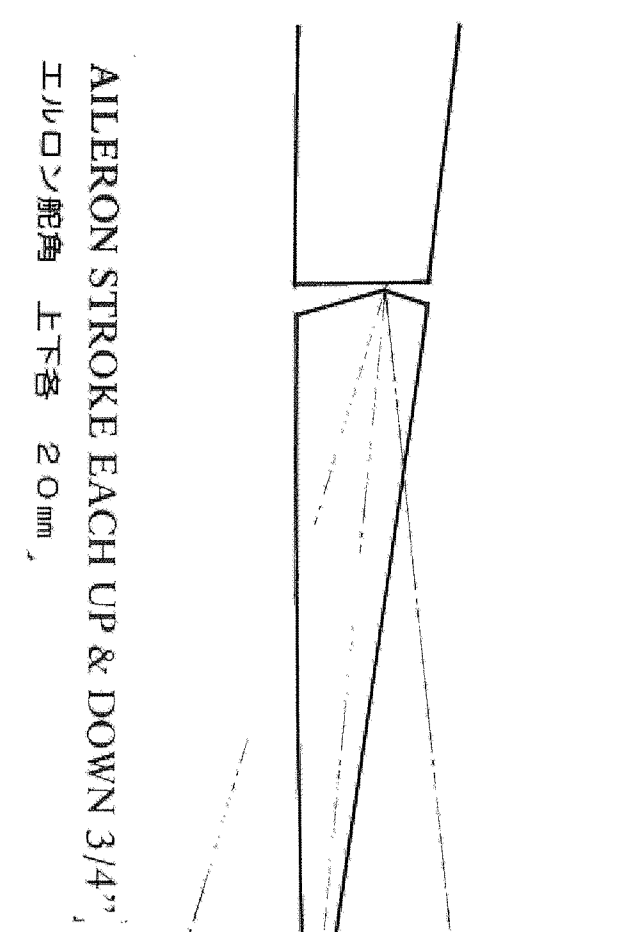
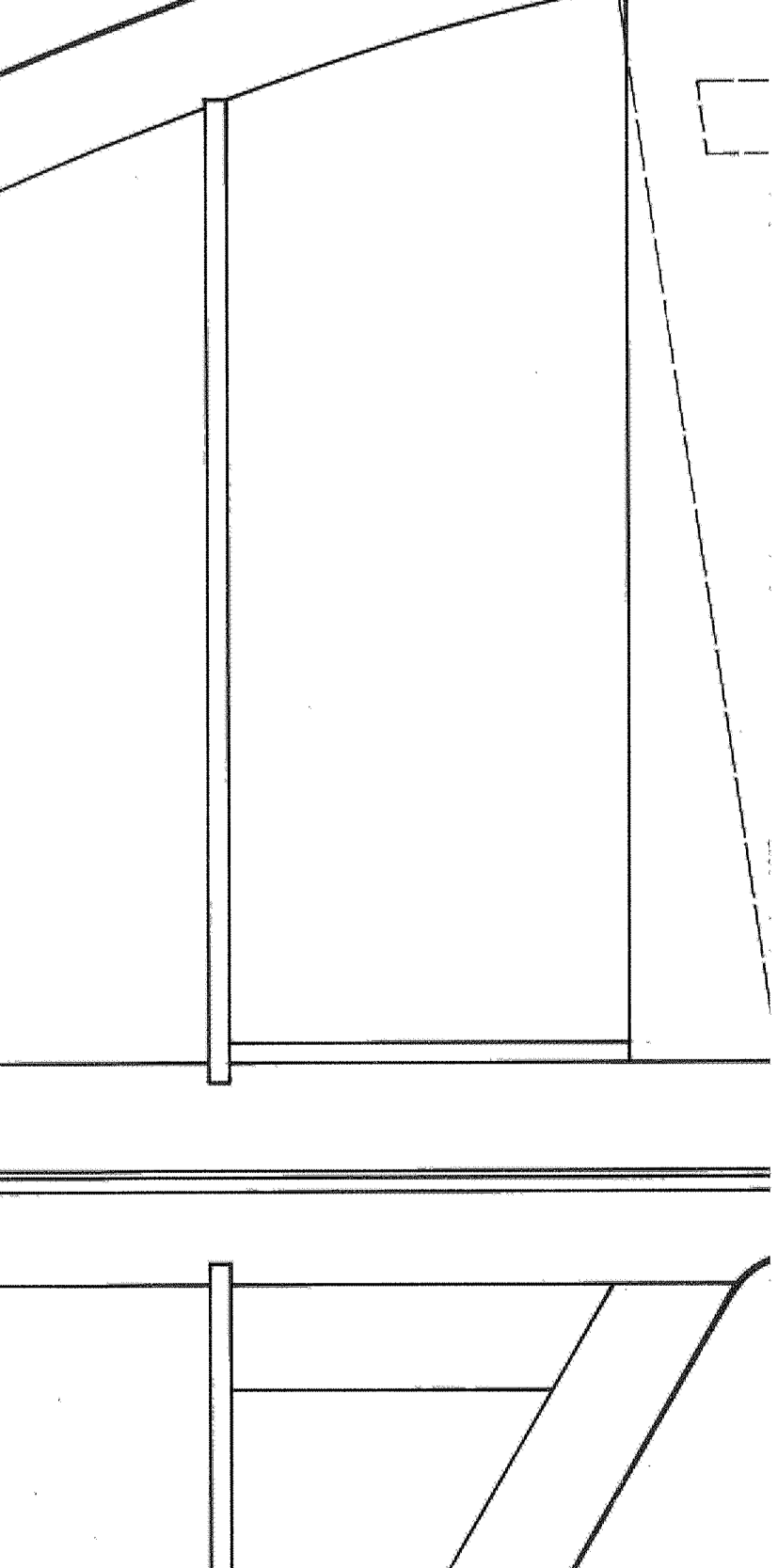
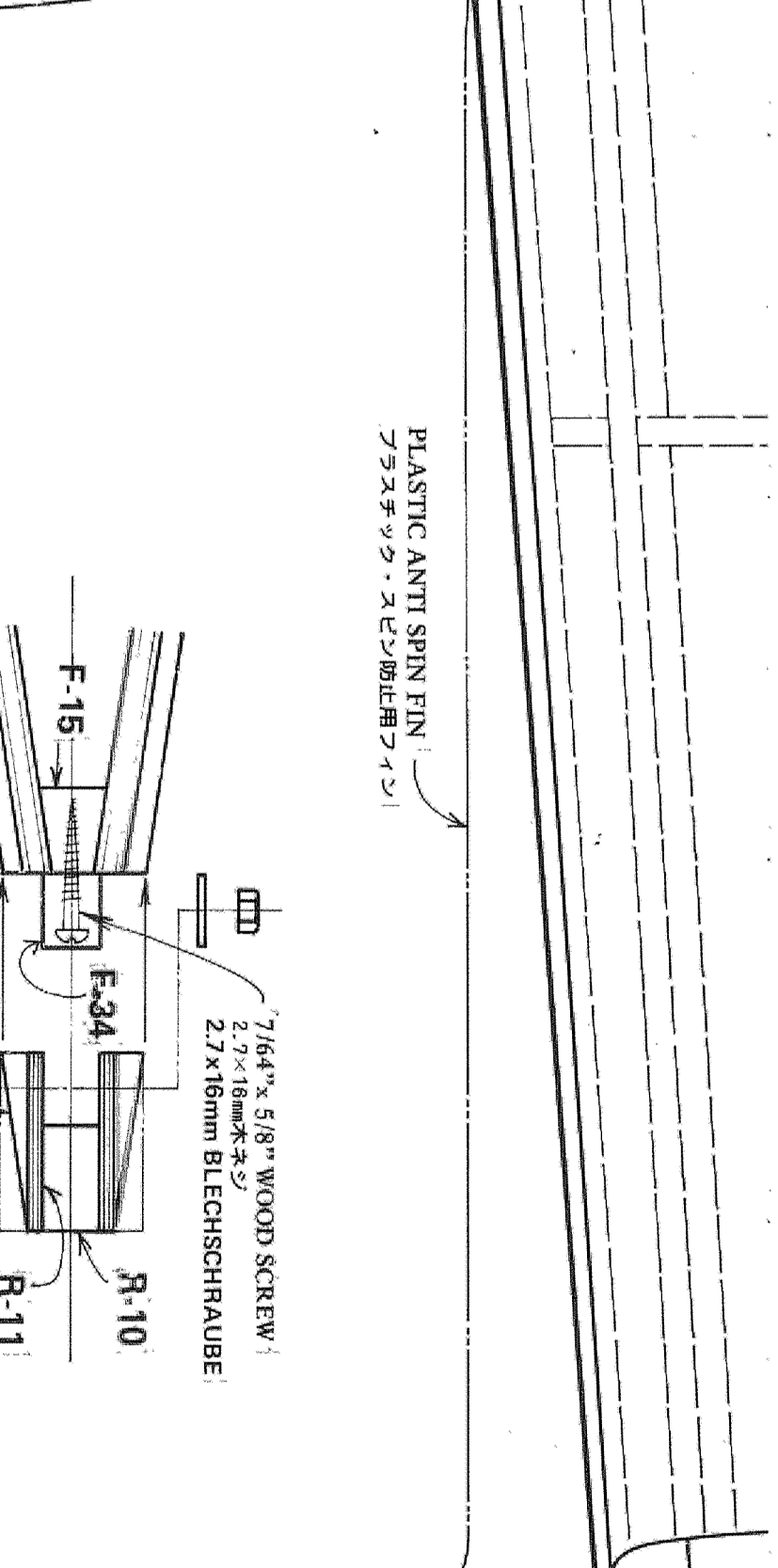
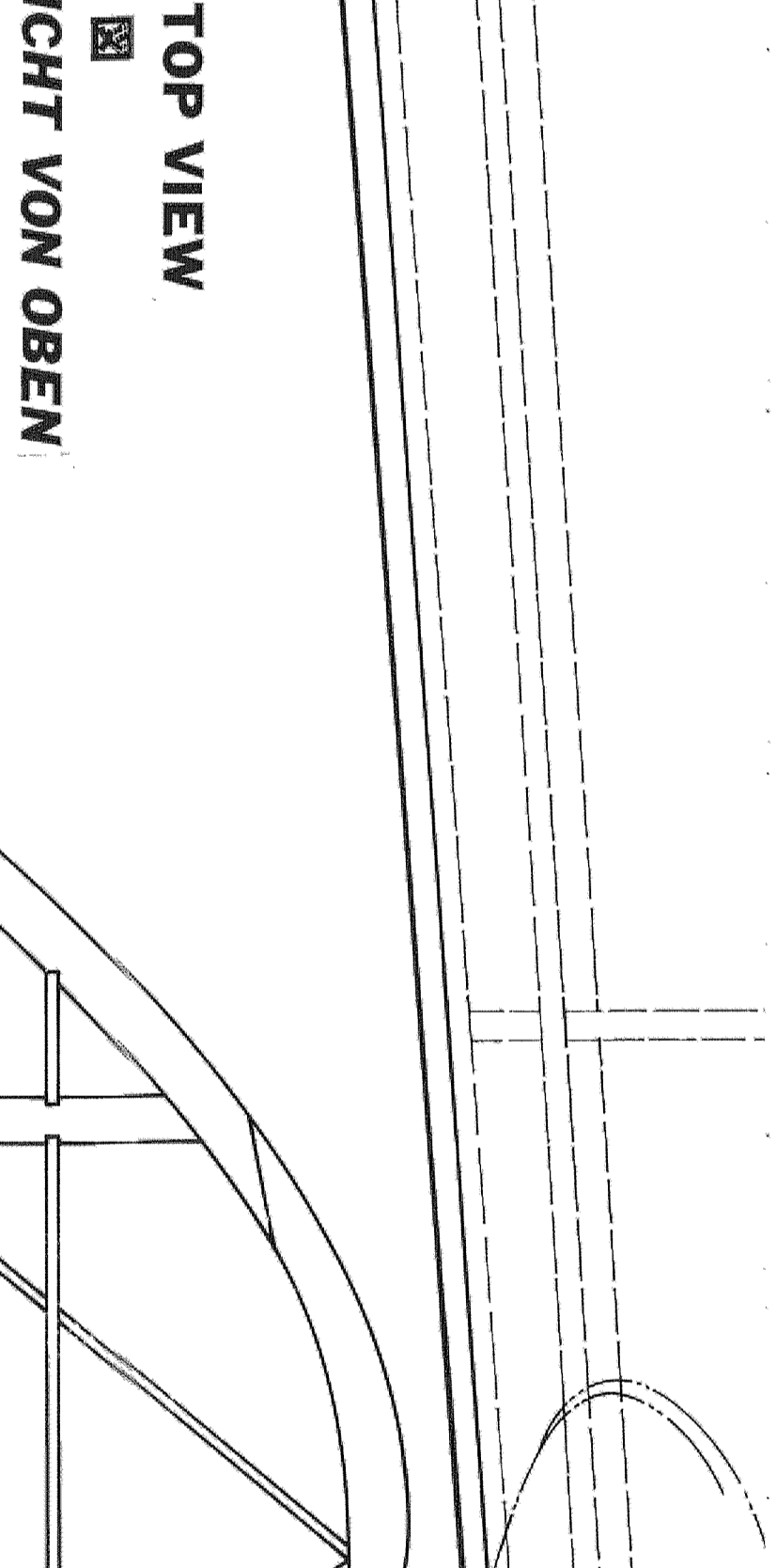
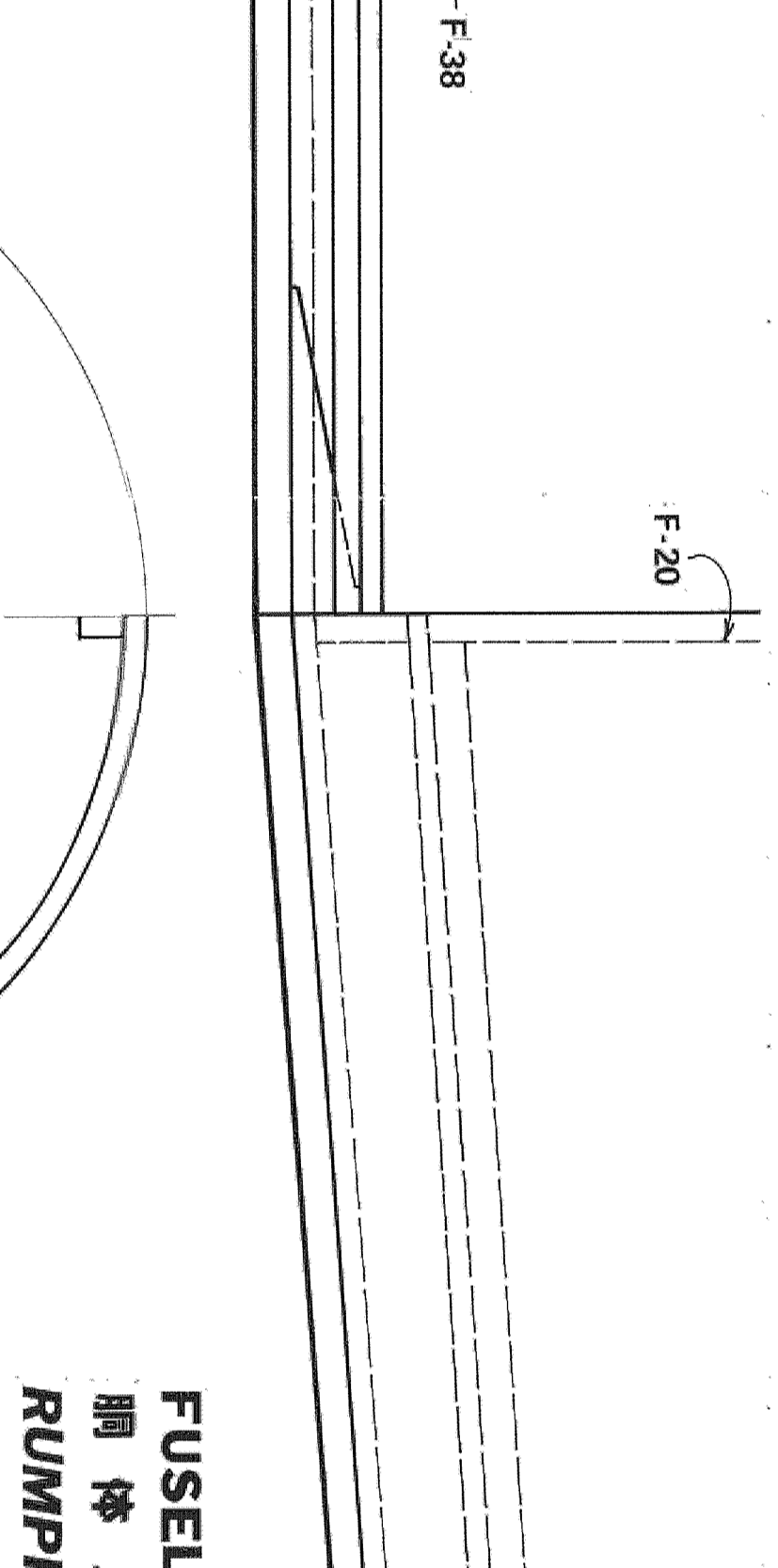
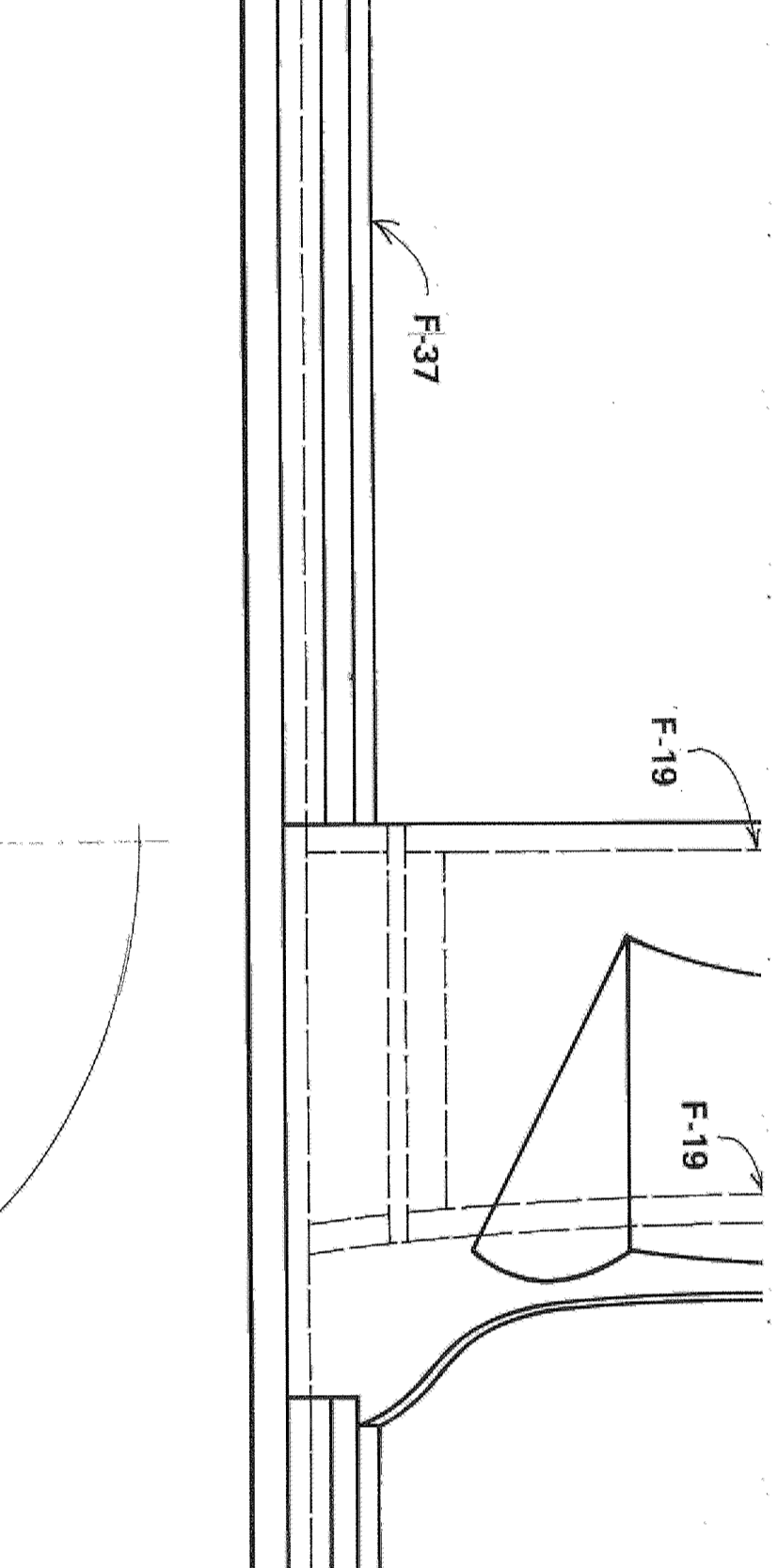
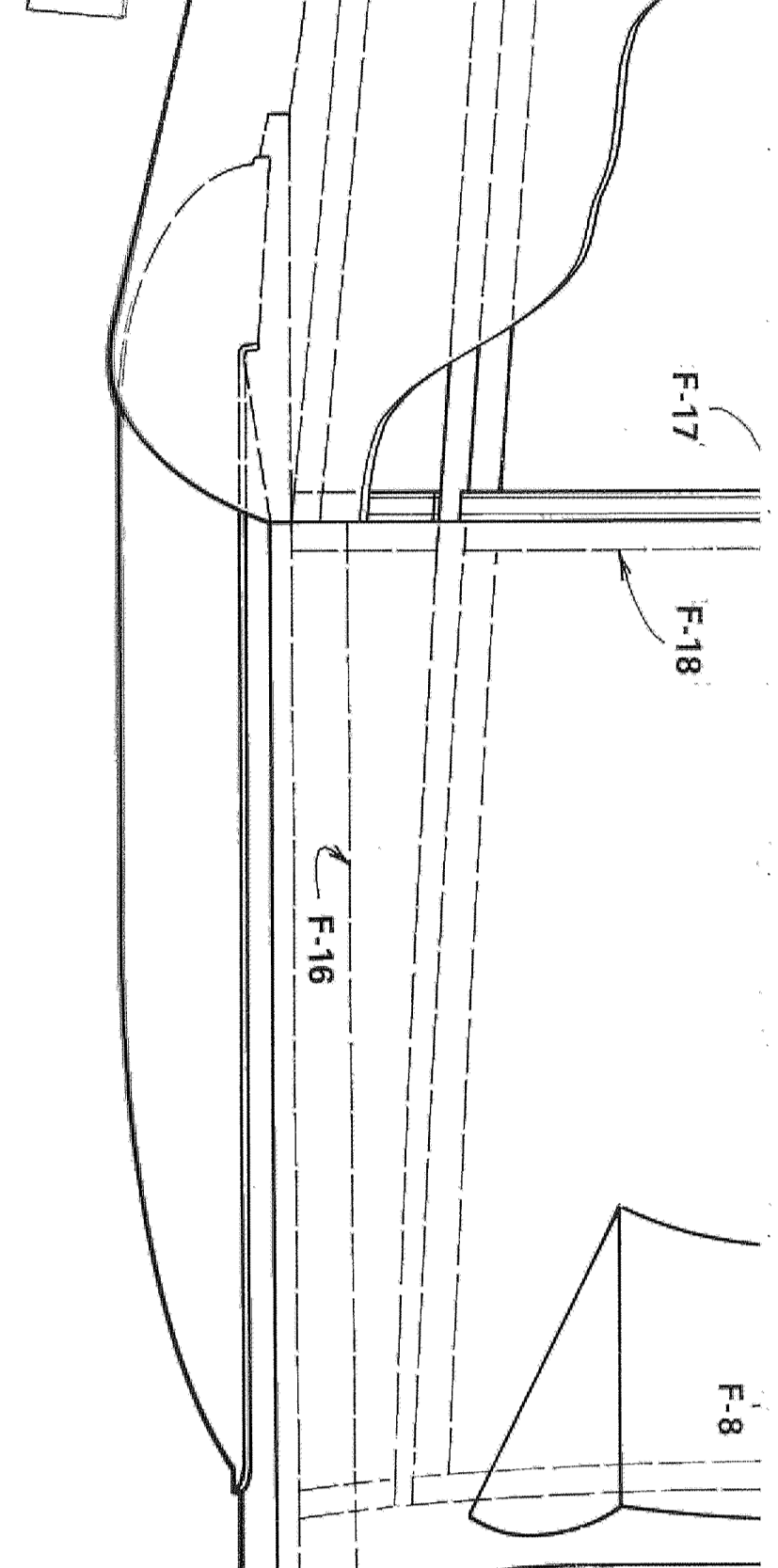
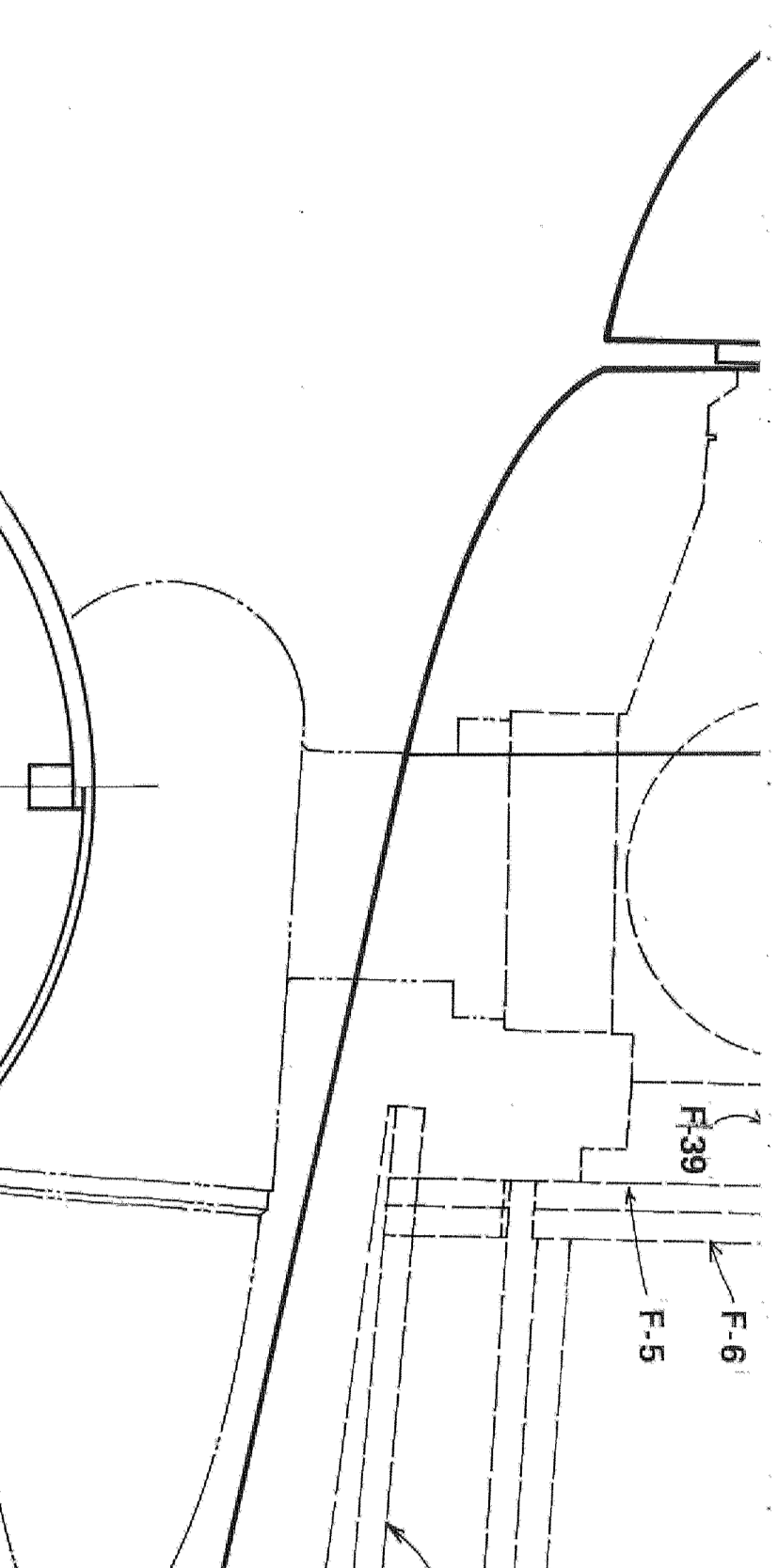
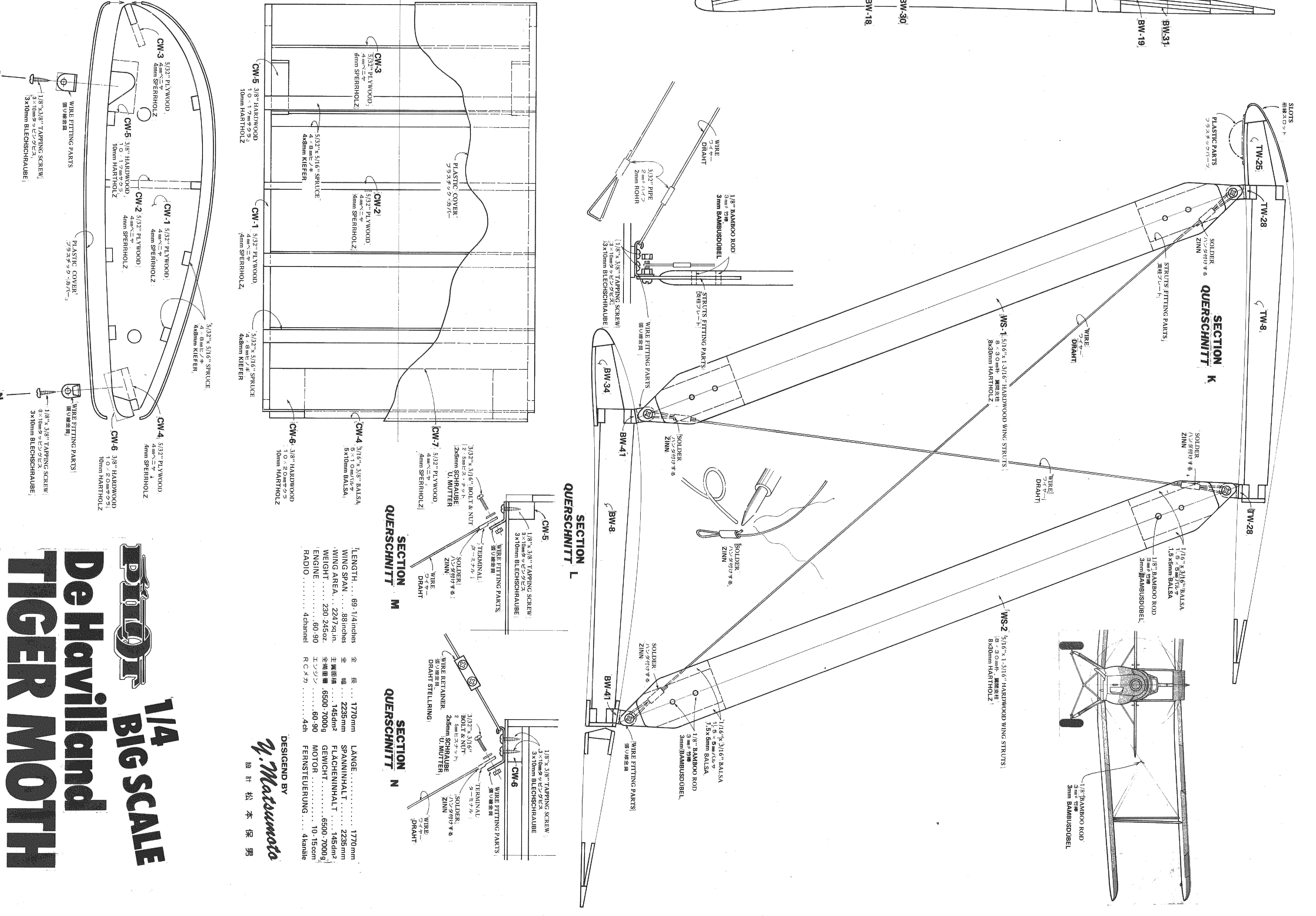
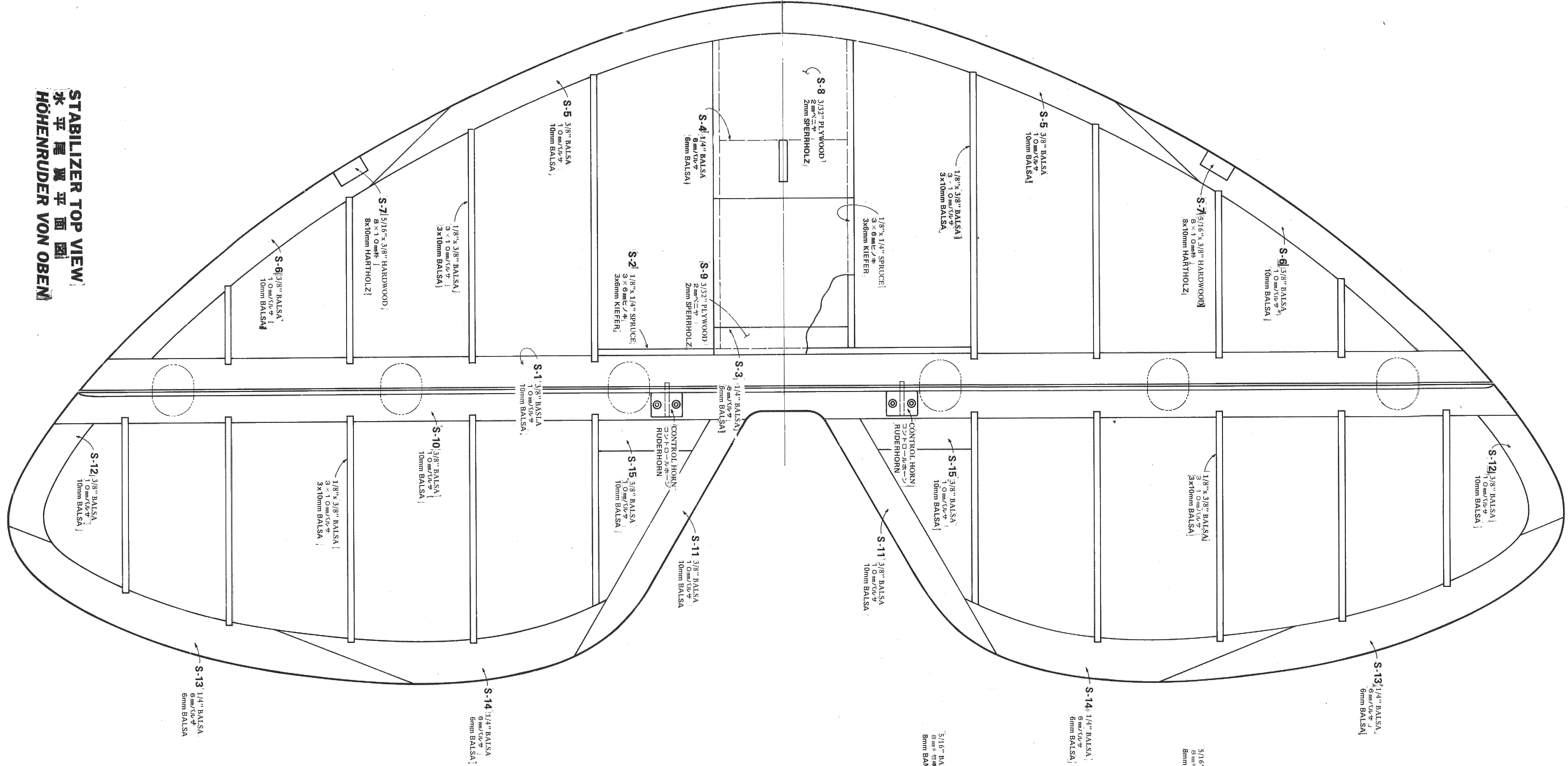


ELEVATOR STROKE EACH UP & DOWN 1" = 1' 1" 2.54cm



ALL IRON STROKE EACH UP & DOWN 3/16" = 2.00mm 5.08cm





DESIGNED BY **McAlister**

DESIGNED BY 麦加里士

LENGTH: 68' 14 inches 2 8 1770mm

SPAN: 27' 0 inches 8 1700mm

WING AREA: 230 sq. ft. 21.3 sq. m

WEIGHT: 6500 lbs. 2948 kg

RADIO: 400 ft. 122 m

By OK MODEL CO. LTD.

Prior
1/4 BIG SCALE
De Havilland
TIGER MOTH